

### TIGERFLOW Systems becomes a part of the Ruhrpumpen Family

TIGERFLOW Systems, LLC is now a part of the Ruhrpumpen family, the company will continue operations at the Dallas, TX manufacturing location and will operate as an independent subsidiary.

TIGERFLOW is an industry leader in packaged pumping systems for Domestic Water, Fire Water Systems, HVAC, Industrial, Heat Transfer, Municipal, Landscape Irrigation and Custom Controls.

This recent change will give TIGERFLOW access to a worldwide distribution network and allow Ruhrpumpen to increase its competitiveness in the standard and customized pumping packages. The combination of Ruhrpumpen's global network and TIGERFLOW's experience will ensure quick and solid growth in this specific market in the near future

Contact your Ruhrpumpen representative in case you would like to know more about the packages. Also for additional information, please visit [www.tigerflow.com](http://www.tigerflow.com)



Heat transfer system – Tigerflow



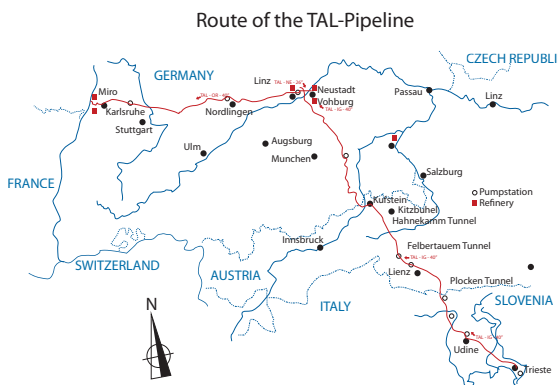
### Ruhrpumpen pumps have been transporting more than 1 billion tons of crude oil from Italy across Austria to Germany



Transfer Pump - ZM IP 375/09.

For more than 40 years the Transalpine (TAL) Pipeline has been operational with Ruhrpumpen pumps. This pipeline runs for 753 km from the Adriatic sea to South-West Germany. In Europe this is one of the most essential pipeline systems which ensures the supply of crude oil in Austria and Germany.

The TAL facilities are being operated by approximately 210 competent and committed staff members.



The installed Booster pumps are Ruhrpumpen Model ZM II 634/08 while the transfer pumps are Ruhrpumpen Model 375/09 in series operation. Besides these pumps, they have Ruhrpumpen model ZLM running in parallel operations at all stations. Ruhrpumpen is very pleased to have contributed to the success of the transportation of more than a billion tons of crude oil without oil accidents.

### ■ Ruhrpumpen Tulsa, Oklahoma facility for 10 years with Ruhrpumpen



The Tulsa factory has a long history, since 1966 it has been in the same location and the same building. There are still a few of employees that were here from the beginning in 1966.

The facility has a long and proud reputation of producing the Byron Jackson heritage product that has served the refining, power, and water markets since the 1800's. The factory has seen ownership changes here and there over the years, but has been in the hands of the Ruhrpumpen group for 10 years now.

The Mayor of the City of Tulsa, Mr. Dewey Bartlett was present that day at the factory for the Ruhrpumpen ten year celebration. He made a great speech to the employees and was able to give encouragement to them by emphasizing how important they and Ruhrpumpen are to the Tulsa economy.



### ■ Ruhrpumpen adds the new ANSI, End-Suction Low Flow Pump to its Standard Products

The CPP-L is the Low Flow version of the CPP-21 (ANSI – End Suction pump line from Ruhrpumpen). This model has been designed to fill the gap on the low flow side of the CPP-21 range.

The new pump complies with the ANSI B73.1 Standard and this pump can be used to replace existing ANSI B73.1 equipment without any problem. There will be no need for piping or base changes.

With low flow applications, it is important to reduce the radial load and potential shaft deflection issues. Ruhrpumpen's radial vane impeller and concentric pump casing for the CPP-L are specifically designed to reduce these issues at low flow or throttled operating conditions. The radial vane impeller with balance holes also reduces seal chamber pressures. This will lead to increased seal and bearing life and less unplanned system downtime.



### Besides the highly engineered pumps from which you probably know Ruhrpumpen, the company also has the complete standard product line available



*Vertical Inline Pump*



*ANSI end suction process pump*



*ANSI end suction Low Flow pump*



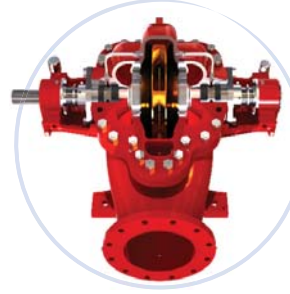
*Split case pumps*



*End Suction Fire Pumps*



*Vertical Turbine Fire Pumps*



*Split Case Fire Pumps*



*Pre-Packaged Pump Skid*

Some of these standard products are available with a same day or "Quick Ship" Program, you can ask your Ruhrpumpen representatives for more information.

### Ruhrpumpen Orland, California facility ships full truck load of Barge Pumps

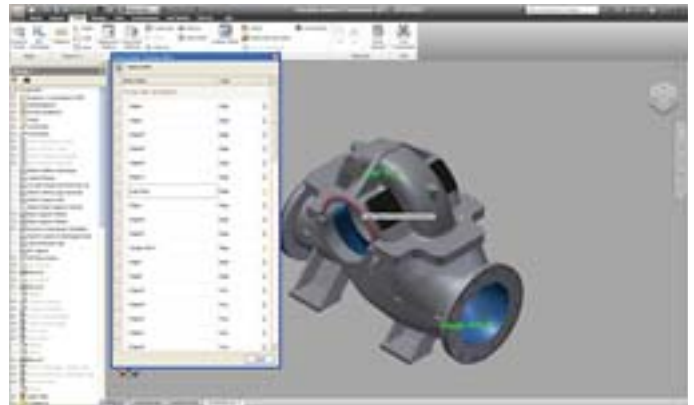
The Orland facility which specializes in the Barge Pumps ships its barge pumps on a 36 foot flatbed. Besides the Barge Pumps which serves the market of maritime transportation of petroleum distillates, this facility in California also produces vertical turbine pumps / axial flow and propeller units.



Contact Orland at:  
6990 Haigh Drive  
Orland, CA 95963 U.S.A.  
Phone: +1 (530) 865-PUMP (7867)

### ■ R&D department Ruhrpumpen creates Drawing Automation Tool to Decrease Time to Launch New Pump Lines

To decrease the overall time in development of new pump lines, Ruhrpumpen Design Center, has developed a Drawing Automation tool. This tool allows important time saving in drawing generation, as well as the standardization of the drawings. On Casing and Impeller Casting drawings, the time dedicated by each engineer/designer is reduced by 50%, while on Casing and Impeller Machining drawings the time reduction is about 30%. The tasks that require time from the engineer, using this tool, are model preparation, mainly naming of entities (faces or edges), and subtle aesthetic changes, once the drawing has been generated.



Model preparation.

The Drawing Automation tool was created within Autodesk Inventor, and it is compatible with models created on this platform.

### ■ Ruhrpumpen manufacturing facilities in Germany, USA and Mexico Pre-qualified for Fluor

Upon review of all information and physical inspection of these facilities, Ruhrpumpen has been Pre-Qualified for the supply of "Mechanical Rotating" equipment, material, supplies and/or related services. This is another addition to the already many customers that have Pre-Qualified the Ruhrpumpen facilities.



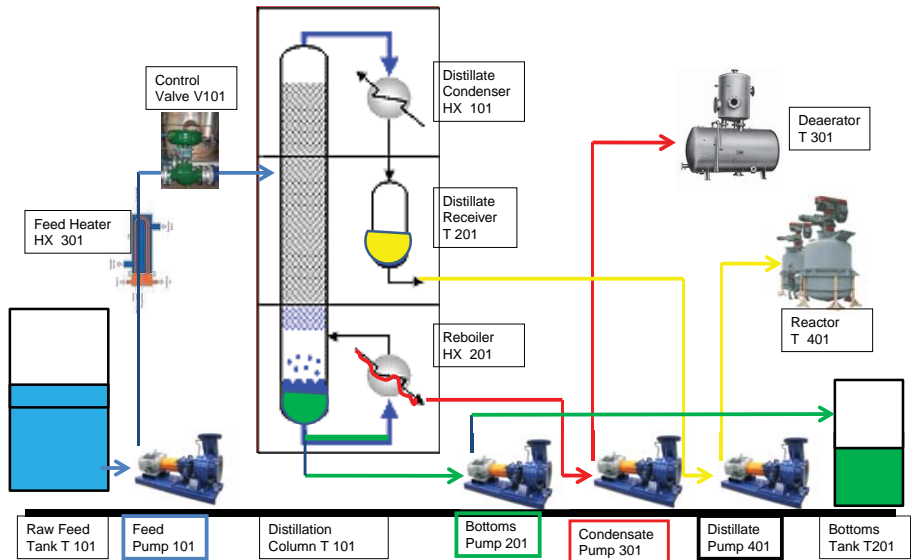
### ■ Ruhrpumpen gives pump classes at Villanova University in Pennsylvania



VILLANOVA UNIVERSITY

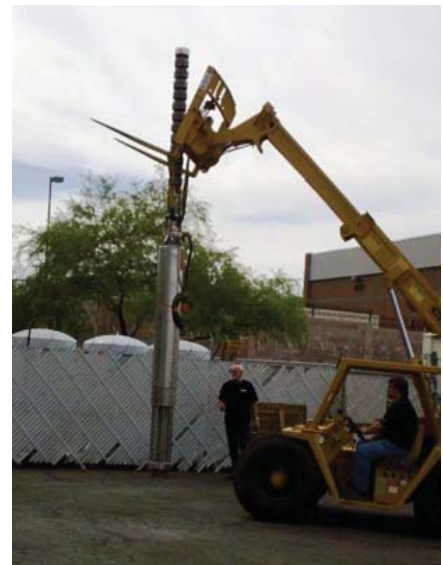
The classes of Senior Chemical Engineering and Equipment design help the students to learn about system head, performance curves and as home work they make real pump selections in the GPS system that is being used at Ruhrpumpen to select the pumps. The Ruhrpumpen Distributor Kriebel Engineering Equipment & Anchor Sales from Philadelphia are very active in setting up these classes. With this effort we are helping new generations to prepare them for “real world” scenarios.

### Proposed New Distillation Unit



### ■ Engineering Group (PEG) in Arizona installed a 8A-12/13 stainless steel submersible turbine pump

This pump is for an emergency flooding of the mines. The customer was very pleased with the attention that was paid to detail on the construction.



### ■ Ruhrpumpen signed contract with Construction Company for its plant construction in Rio de Janeiro, Brazil



Ruhrpumpen do Brazil has signed a construction contract with EFER CONSTRUTORES ASSOCIADOS LTDA, to build a 7,500 sq mt plant in Rio de Janeiro City, close to the most traditional Brazilian refinery - REDUC. EFER has today 1,000 employees and it is in business for 20 years. EFER's impressive background includes about five hundred major construction projects in Brazil

The new plant will offer Ruhrpumpen products for the numerous Oil & Gas , Water & Sewage and Chemical projects that will be realized in the next few years in Brazil.



### ■ Ruhrpumpen Brazil facility participates in Oil & Gas tradeshow

In June Ruhrpumpen Brazil was present at the Brazil Offshore international exhibition and Conference Oil & Gas. It took place in the city of Macaé, the main operational base for the exploration, drilling, and extraction of oil in Brazil.



With the large investment plans in the Oil & Gas sector in Brazil this was an opportunity for many like-minded professionals to share information and to contact Ruhrpumpen. The presence of Ruhrpumpen in São Paulo and Rio de Janeiro gives the company the confidence it can serve all the local customers to help them with their future pumping needs.

### ■ Participation at the Antofagasta, Chile Mining tradeshow

The objective for this tradeshow is to make known the industrial and mining potential of the Second Region of Chile; to promote its development and have a commercial and technological exchange. Mining is an important market for Ruhrpumpen and the company has presence with 2 sales offices in Chile to serve the market.

#### Ruhrpumpen Chile

Miguel Claro 195, Oficina 407, Providencia, Santiago, Chile  
Tel. +56 (02) 235-6456 / Fax. +56 (02) 264-9345  
Contacto Zona Norte (CALAMA)  
Cel. +56 (9) 6249-0204



### ■ Ruhrpumpen continues supplying high quality products

When talking about high quality products and prompt delivery, Ruhrpumpen is always the first choice. To name one more of our successfully finished products, we will refer to the horizontal split case pump that was recently supplied to a steel mill in Monclova, Mexico. This is one more example of our commitment to our clients. The 24 x 30 x 34D HSC pump being used in condensate service has a capacity of 20,000 gpm delivered at a head of 105 feet. Here are more details of this project:

#### Material of Construction:

- Cast Iron casting
- Bronze impeller
- SS-316 Shaft

#### Sealing:

- Packing

#### Speed of Pump:

- 590 rpm

#### Steam Turbine rating:

- 640 Hp



### ■ Edmonton, Canada Service Center Dismantle and inspects barrel pumps (BB5)

Due to a severe explosion and fire at the CNRL Horizon site in Fort McMurray in January 2- 6x12 ADC Coker jet pumps were sent in for evaluation after both pumps were subjected to - 40 C temperatures after the forced shutdown. The B pump showed distortion of up to 3mm and after a finite element analysis was deemed scrap and it was estimated the pressure from liquid freezing exerted pressures upward of 2,400 bar on the casing internals causing severe distortion. The A pump after non destructive testing and inspections was dispositioned as sound and suitable for repair, the first stage impeller and the main shaft were distorted beyond reuse and replaced. A shrinkage crack was noted on the casing and evaluated with Fluorescent magnetic particle inspection and shear wave ultrasonic testing final acceptance of the casing was proved by hydrostatic test at 8,300 PSI to prove safe operation at design conditions.

This was the first BB5 worked on at the Edmonton shop and proved to be a huge success as the pump was started early August and ran trouble free. Edmonton also received all of the damaged De Coker derrick equipment, coker valves and completed major repairs and modifications to existing equipment as well as new equipment purchased from Suncor surplus storage. The new replacement pump is scheduled out of Witten Germany August 19 in a record 25 weeks.

The concentration of efforts through Edmonton and Germany ensured the customer was down for a minimum amount of time, it took many hours of engineering, procurement and shop labor to achieve the completion of all repairs in 27 weeks. To maintain schedules some of the components were shipped from Europe using the Russian Antonov A-124 cargo jet, so no expense was spared to meet the start up schedule.



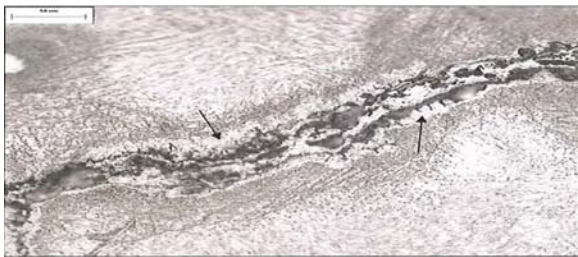
*Impeller and stage casing – coker debris present.*



*Cover removal*



*Scoring and wear on impellers. Impellers with excessive wear will require regrind and overlay of DLC coating.*



*Decarburization along the crack edges.*

### ■ New investments in Ruhrpumpen Service Centers

The Houston Service Center has installed AC/Heat in the shop which created a better work environment for servicing their customer needs.

To increase sales opportunities and the capabilities of the Houston Service Center, the following equipment has been purchased; 5" G&L HBM, 4" G&L HBM, 42" Bullard VTL, (3) Summit Engine Laths, Carlton Radial Arm Drill Press and Cincinnati Mill.

Besides this, new fully equipped trucks at the Houston and Baton Rouge Service Centers are available 24 hours a day to help customers with their immediate needs for repairs and service.



### ■ Ruhrpumpen establishes new Branch in Middle East (United Arab Emirates)

Ruhrpumpen opens a new Branch called Ruhrpumpen Middle East in Jebel Ali Free Zone (JAFZA), Dubai, UAE. This new development is the result of the current growth for Ruhrpumpen in this area and the plans for the near future in the Middle East and Africa.

After receiving the official License from JAFZA on end of March 2011 and finalizing the setup of the new company and facility, Ruhrpumpen Middle East is now delivering Local Pumps Sales, Engineering and Service Support to our Middle East and Africa customers together with the actual Agents network .

Ruhrpumpen Middle East location and contact numbers in JAFZA – Dubai –UAE are :

Location: Jebel Ali Free Zone (JAFZA) South  
LIU FZS5-BA07 (opposite to JAFZA Food Court #3)  
P.O Box : 263340  
Dubai - UAE  
Phone: +971 4 8807456  
Fax : +971 4 880 7457



### ■ Ruhrpumpen Monterrey, Mexico facility is now able to run tests at 50Hz and 60Hz.

With the new investment in the test lab in Monterrey, Mexico, the company is now able to run tests with a Variable Frequency Drive to run motors up to 3000HP @ 4160 volts and multiple speeds between 0-120hz. This is besides the 7,000 Hp capability the plant has for testing at 60Hz.

